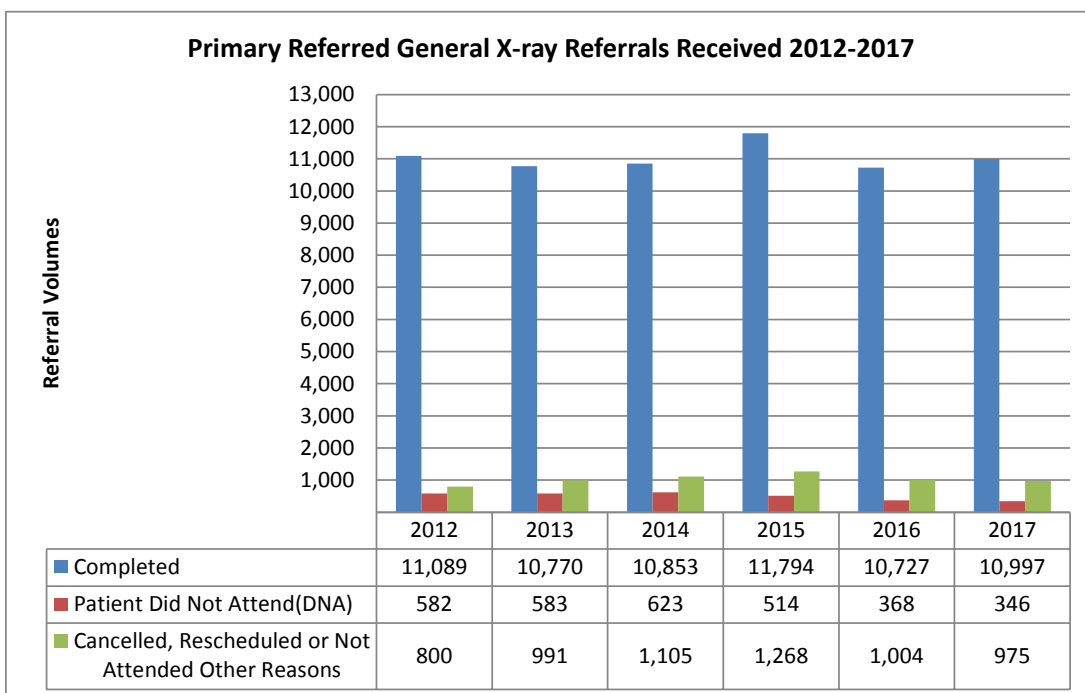
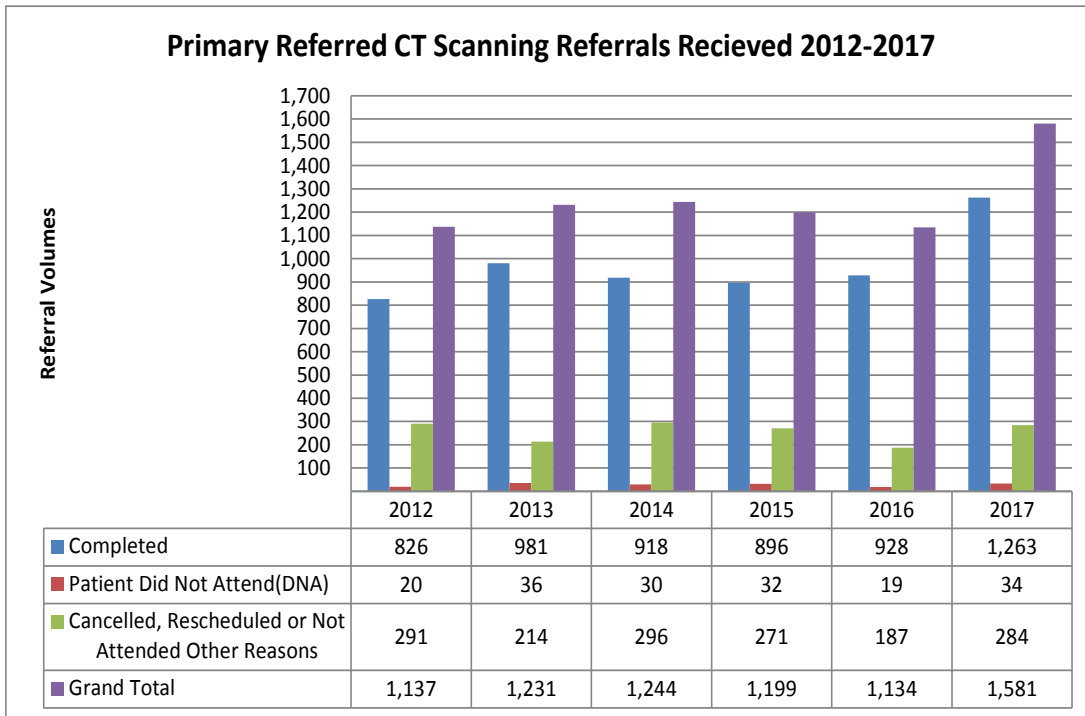
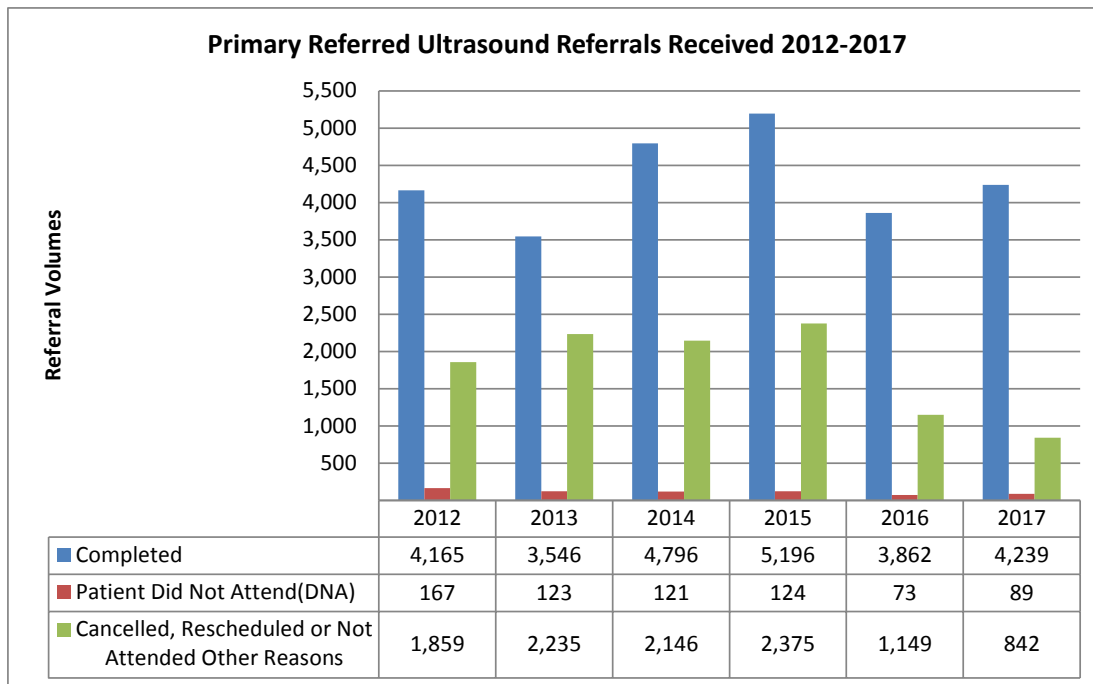


## Improvements in Radiology Wait Times

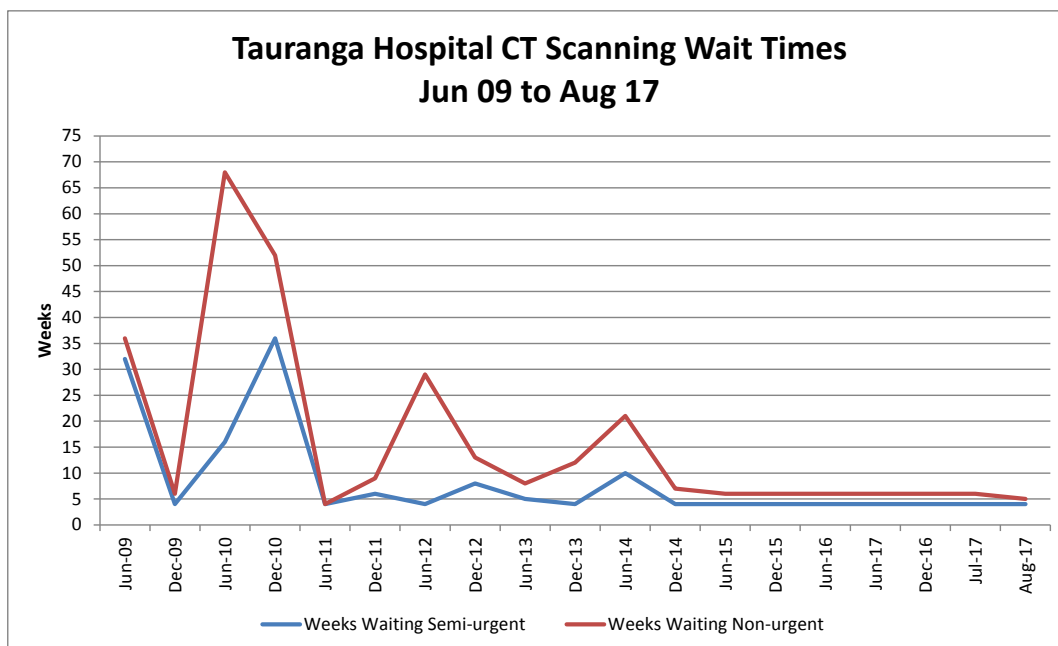
Midland Radiology Primary Referred Access Criteria implemented via Electronic GP Referral System in July 2015.

**Primary Referred Referrals Received, Completed, DNA or Cancelled, Rescheduled or Not Attended for other reasons.**



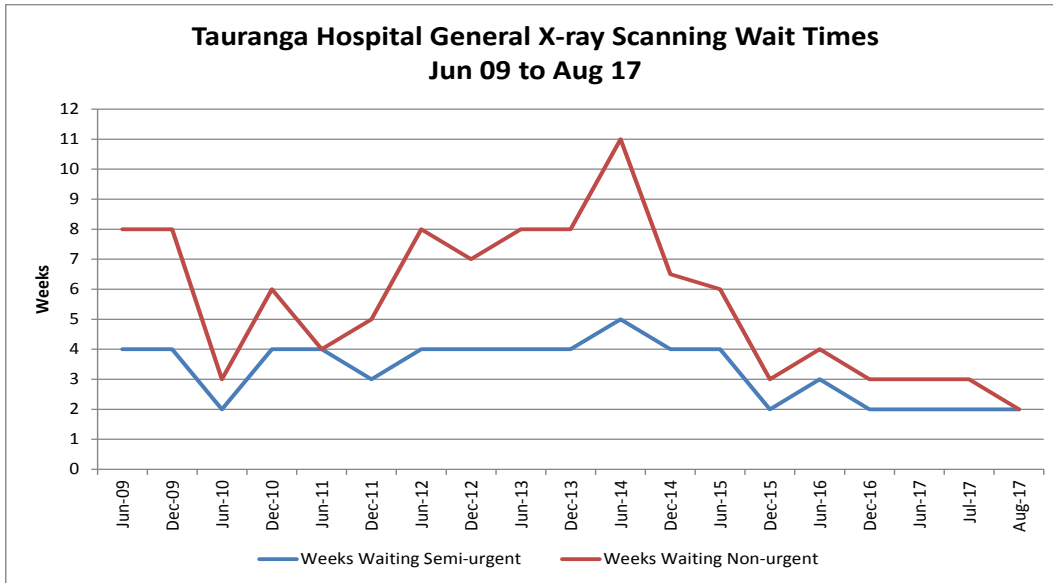


**Tauranga Hospital:**



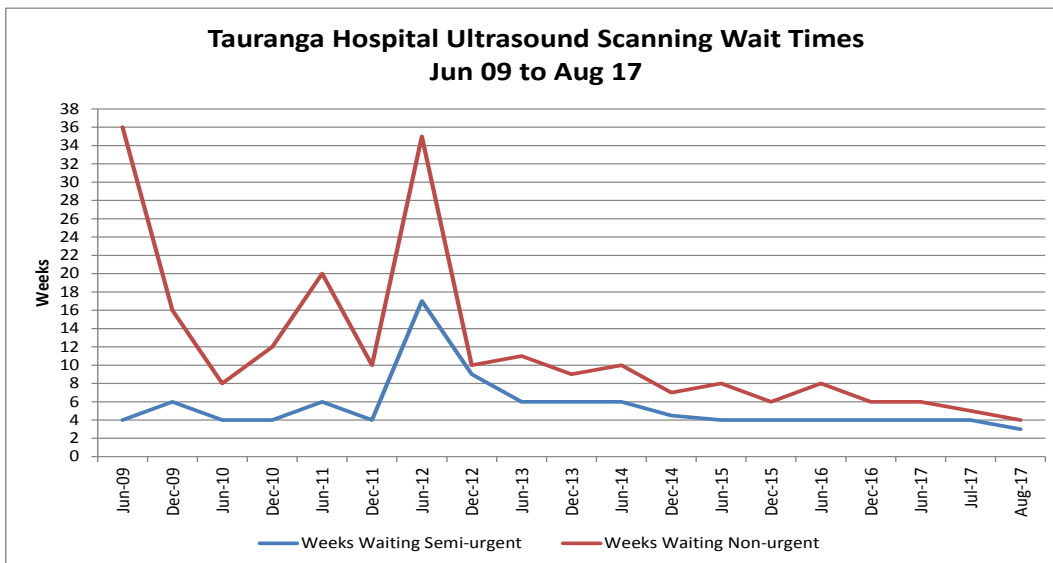
**Notes:**

- 2010 - Tauranga Patients sent to Whakatane for their CT Scan
- 2011 - Joint Venture with Bay Radiology disbanded, therefore there was more capacity on hospital CT scanner for public patients
- April 14 – New Toshiba CT Scanned installed at Tauranga Hospital
- May 14 – CT evening sessions implemented



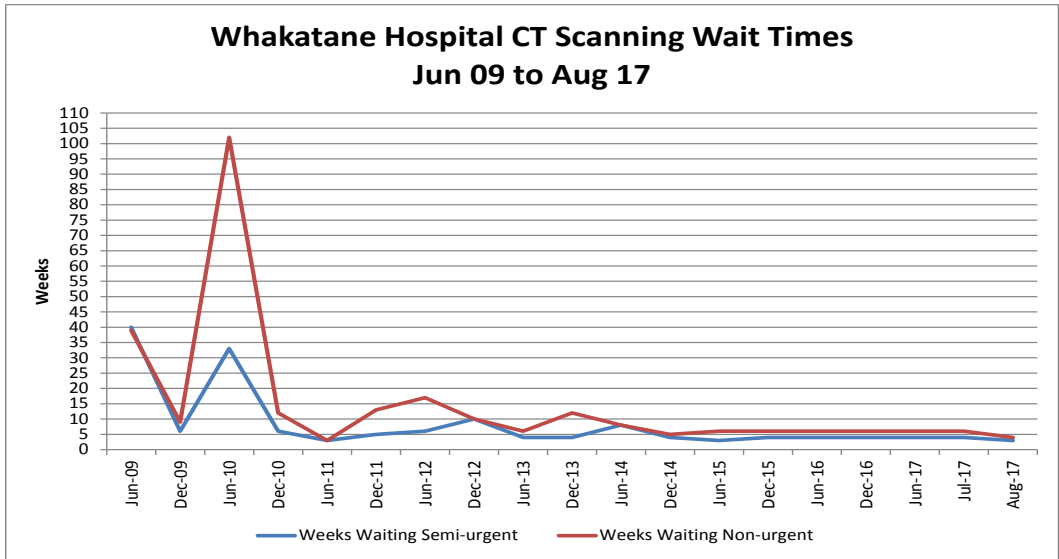
**Notes:**

- July 2010 to May 2011 - Digital Imaging equipment installed from during department refurbishment
- Nov 13 - MRT Staff moved from 35 hour week to 37.5 hour week
- Nov 14 - MRT Staff moved from 37.5 hour week to 40 hour week plus additional FTE



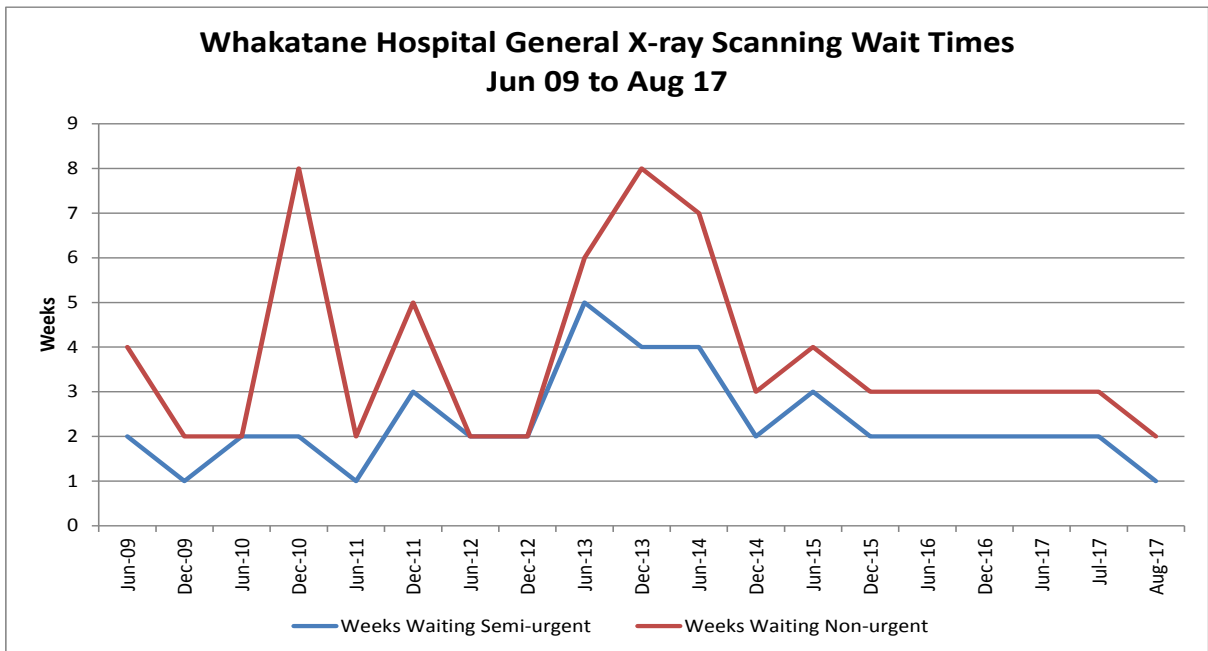
**Notes:**

- Dec 2009 – Ultrasound exclusion criteria introduced and referrals over 6 months waiting were returned to referrers
- 2011-2012 – Sonographer Vacancies
- 2015-2016 – Joint sonographer training scheme with private radiology provider Tauranga



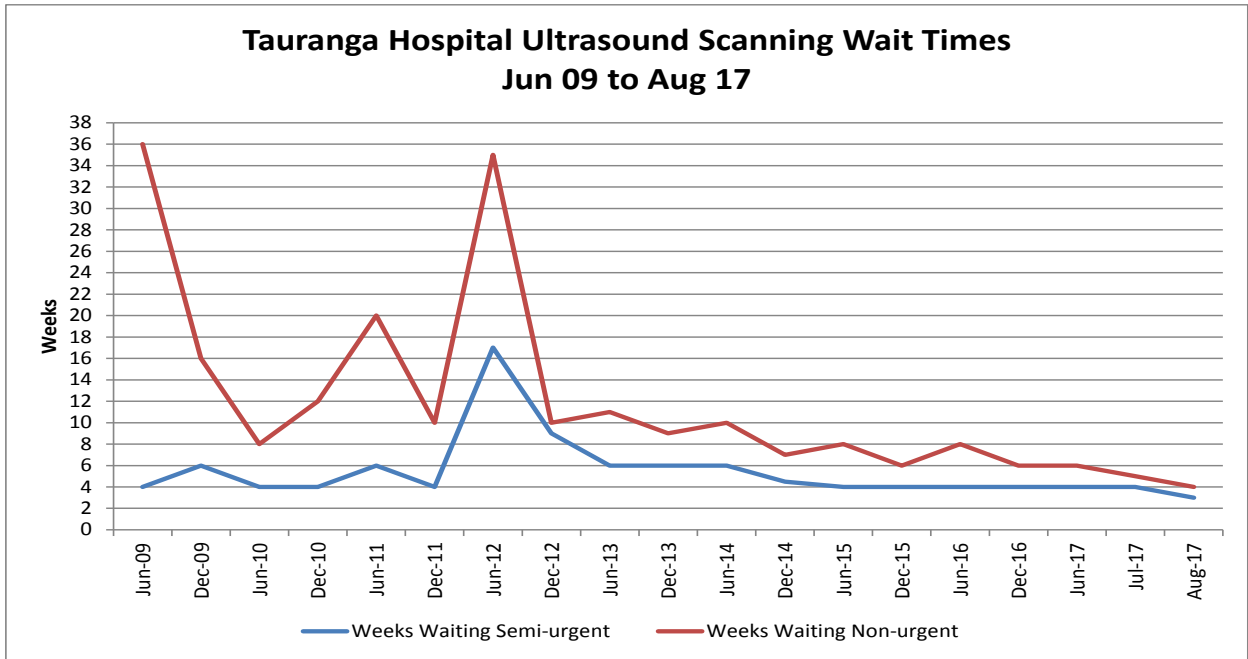
**Notes:**

- 2010 - Tauranga Patients sent to Whakatane for their CT Scan
- 2010 – Review of Booking and Scheduling Systems and MRT work flow
- May 14 - New Toshiba CT Scanned installed at Whakatane Hospital



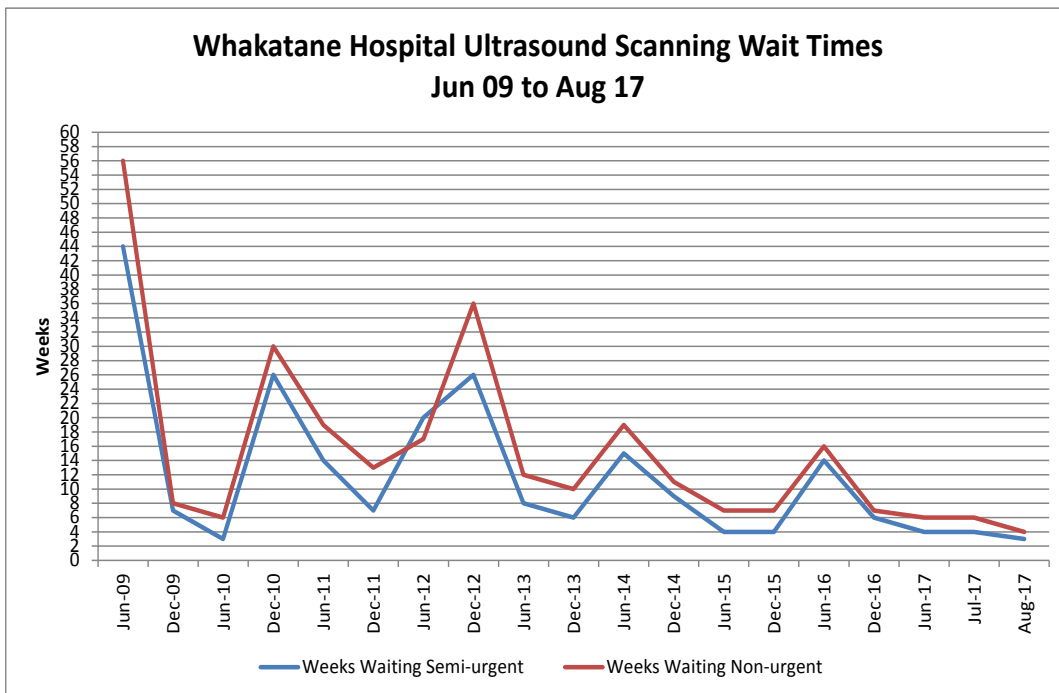
**Notes:**

- 2014 – 2015 New MRT roster including weekend shifts and additional MRT FTE



**Notes:**

- Dec 2009 – Ultrasound exclusion criteria introduced and referrals over 6 months waiting were returned to referrers
- 2011-2012 – Sonographer Vacancies
- 2015-2016 – Joint sonographer training scheme with private radiology provider Tauranga



Notes:

- Dec 2009 – Primary Referred Ultrasound exclusion criteria introduced and referrals over 6 months waiting were returned to referrers
- Feb 12 – Sonographer unable to work – injury – Locums employed as available, Tauranga Sonographers working at Whakatane
- April 2015 – New Permanent Sonographer employed
- 2016-2017 - Joint sonographer training scheme with private radiology provider Whakatane