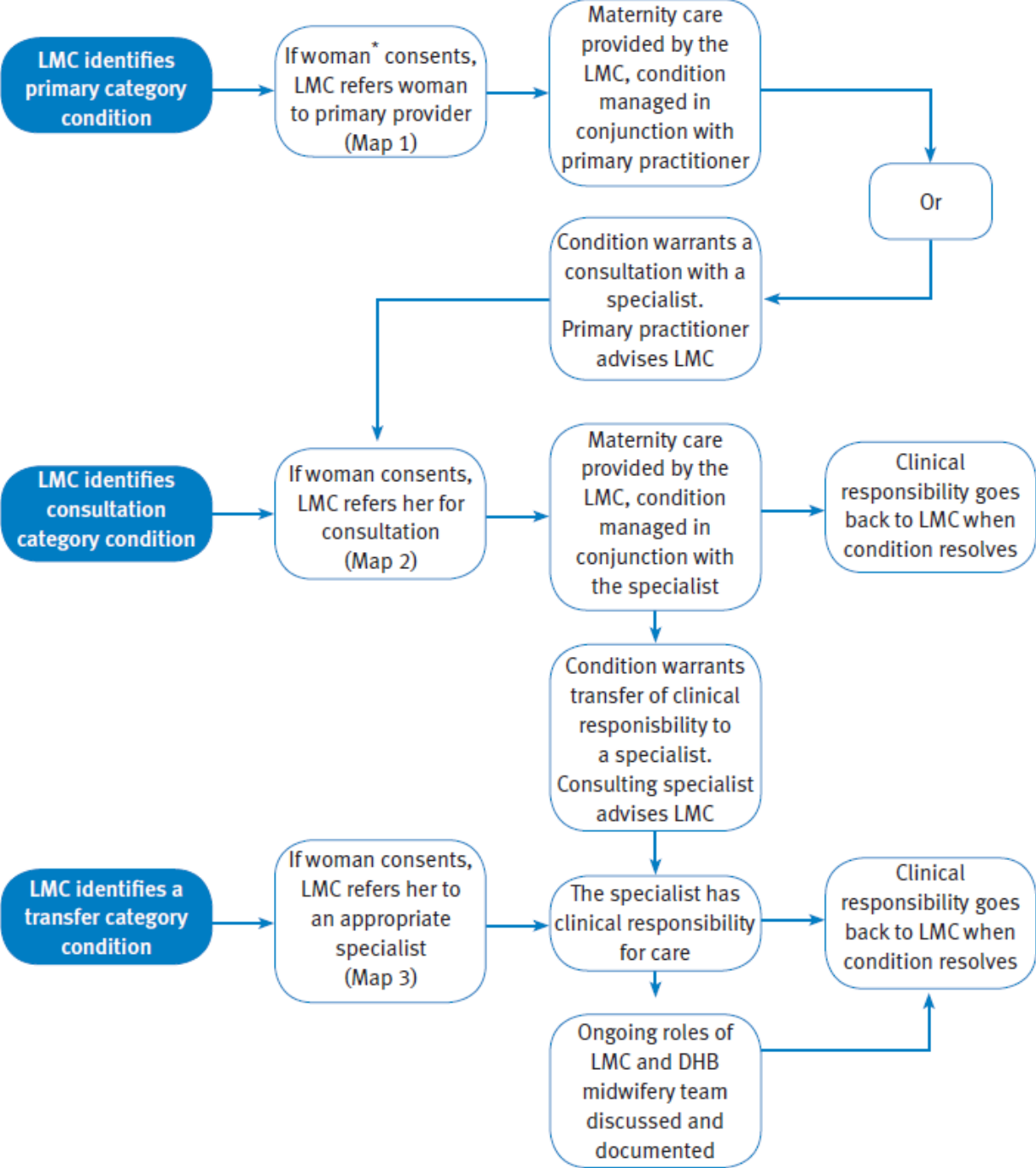
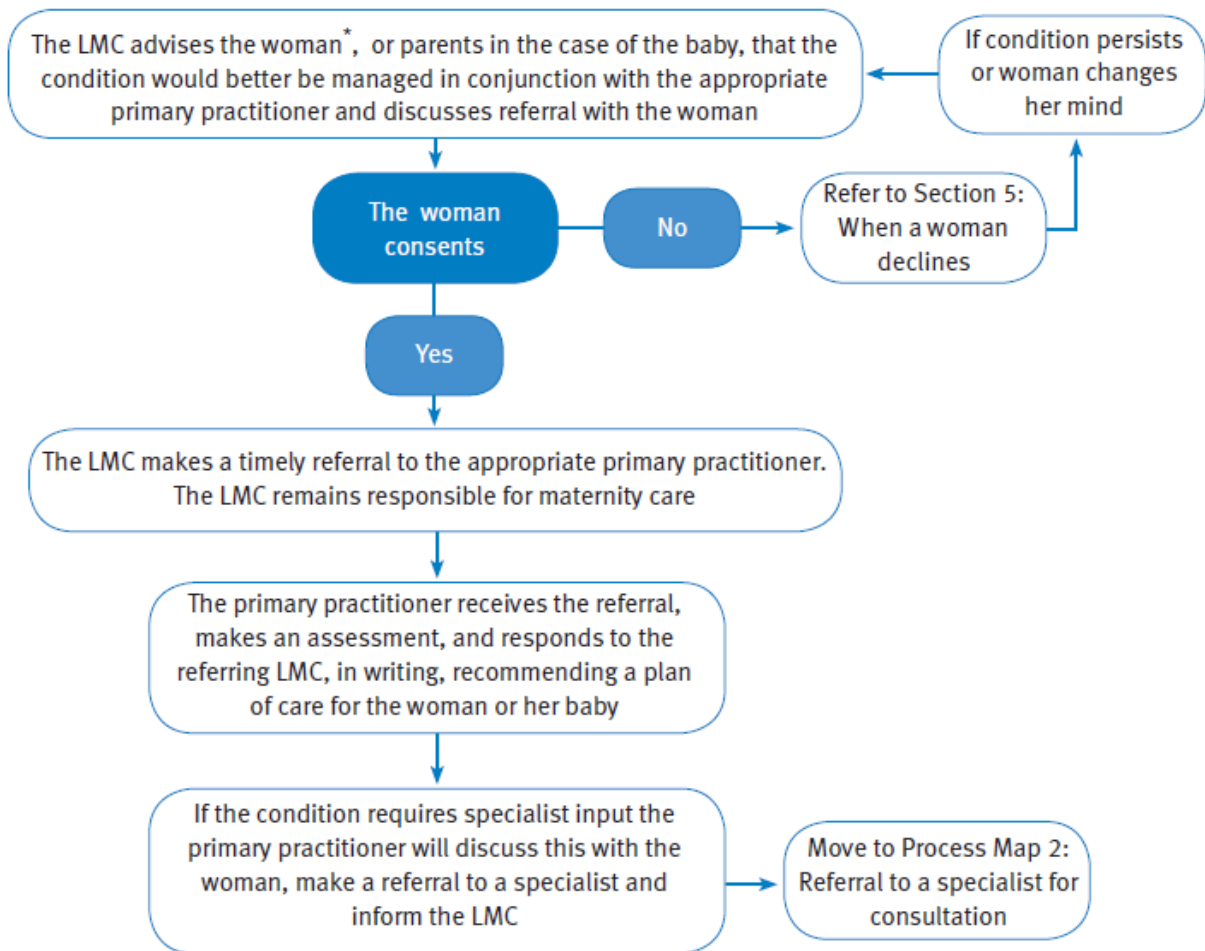


Figure 1: Referral, consultation and transfer: process maps as a continuum



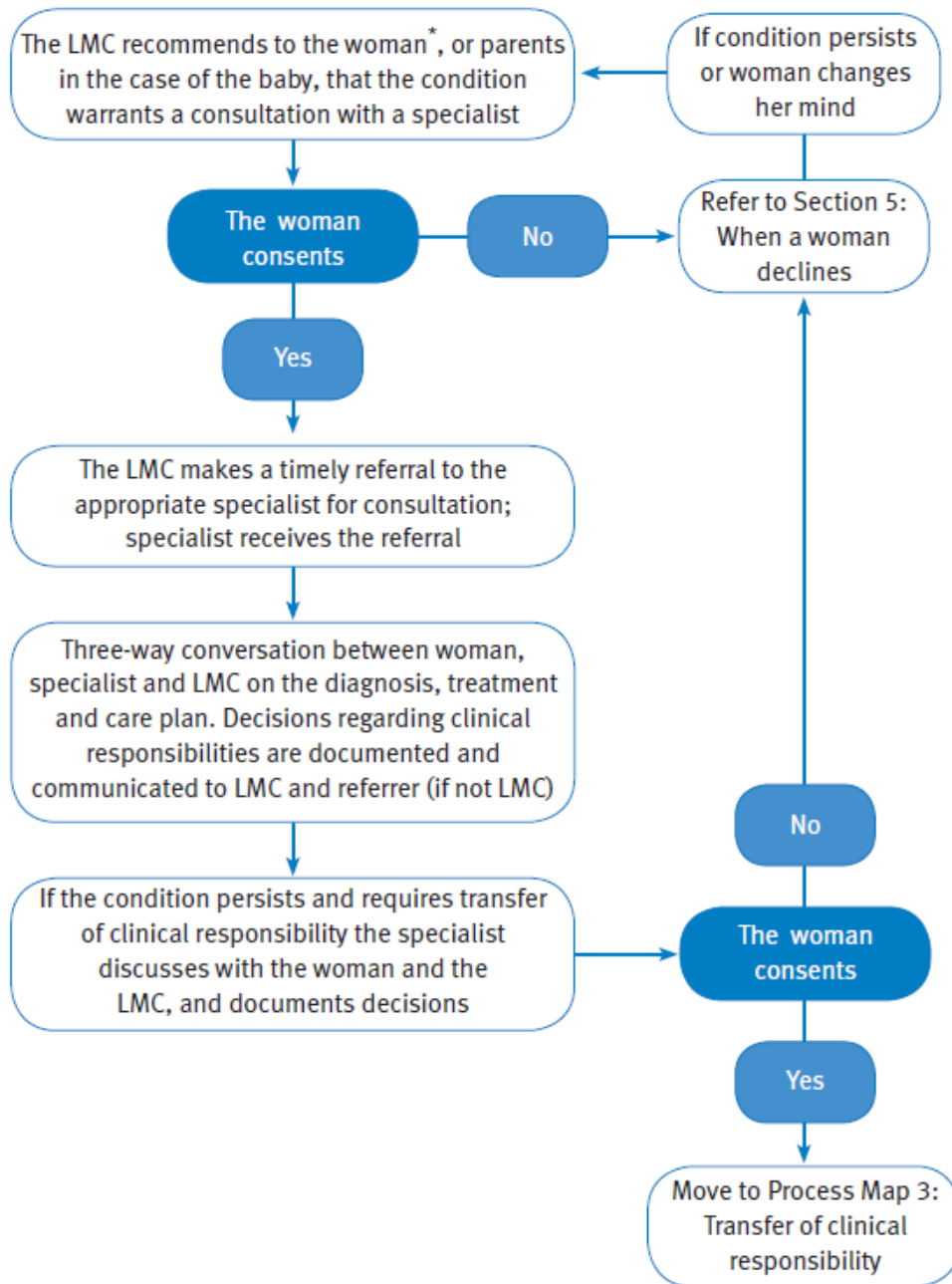
* The woman, her baby and family/whānau (as defined by the woman) are at the centre of all conversations and decisions about her care.

Figure 2: Process Map 1: Referral to primary health care



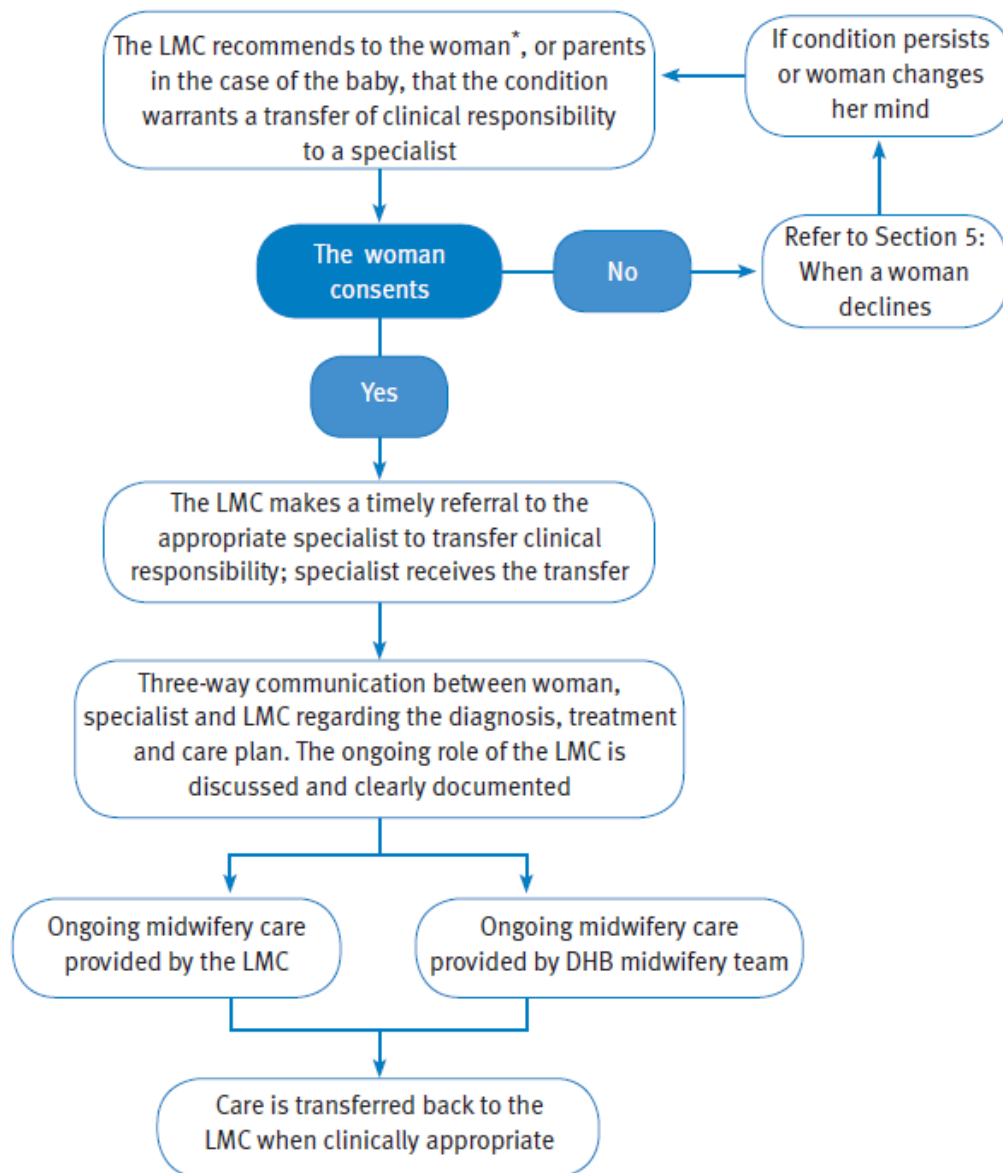
* The woman, her baby and family/whānau (as defined by the woman) are at the centre of all conversations and decisions about her care.

Figure 3: Process Map 2: Referral to a specialist for consultation



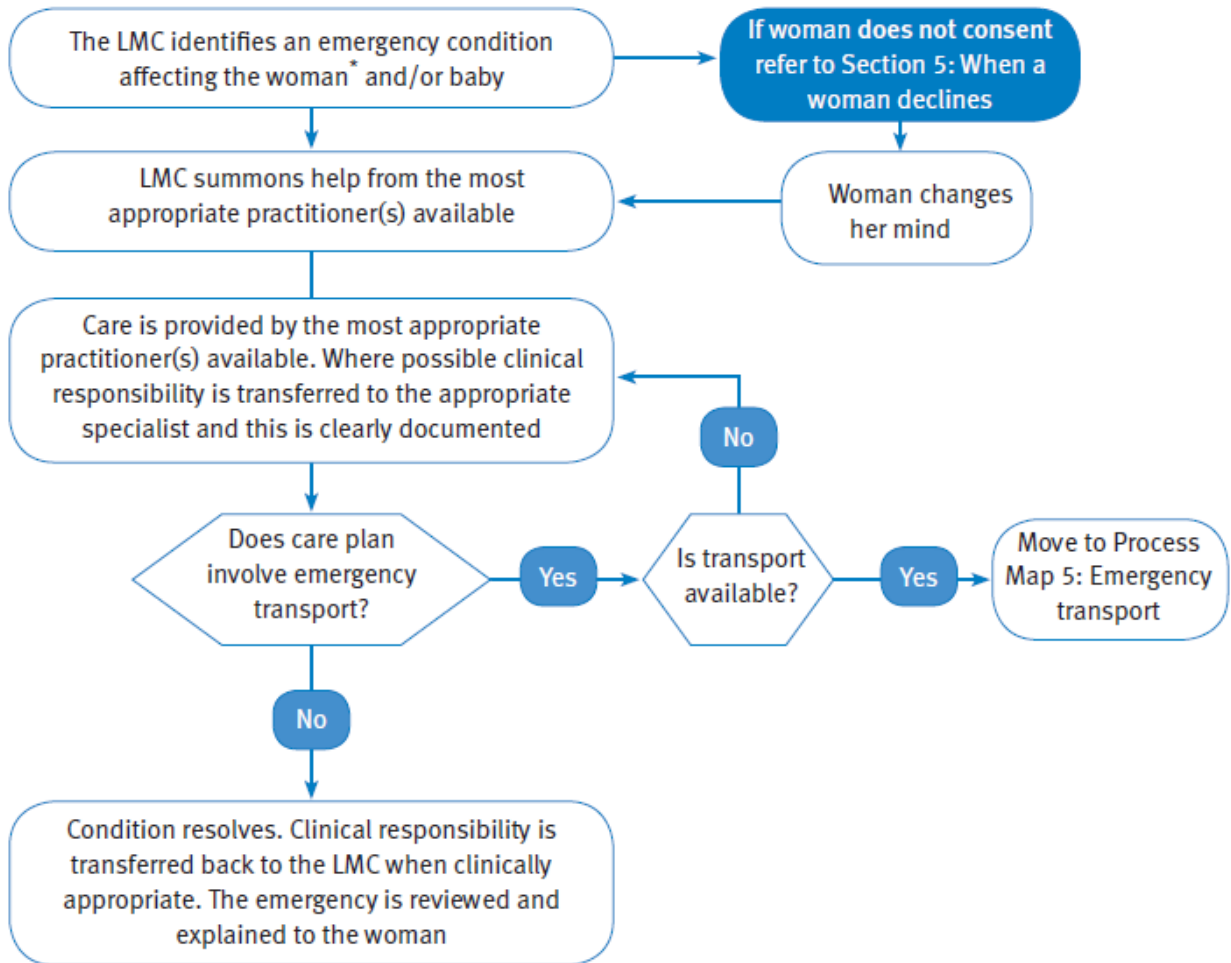
* The woman, her baby and family/whānau (as defined by the woman) are at the centre of all conversations and decisions about her care.

Figure 4: Process Map 3: Transfer of clinical responsibility for care



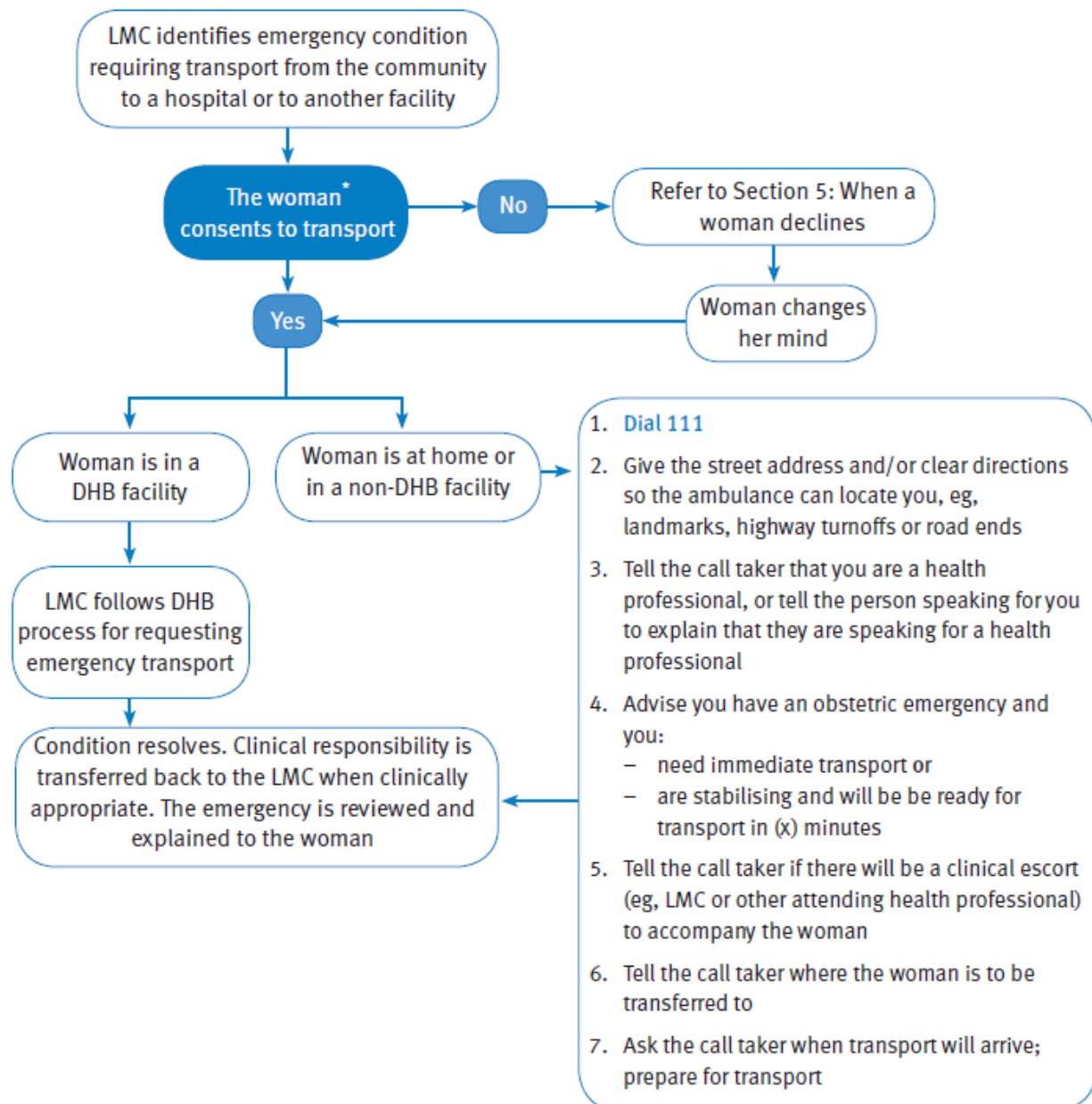
* The woman, her baby and family/whānau (as defined by the woman) are at the centre of all conversations and decisions about her care.

Figure 5: Process Map 4: Emergency transfer of clinical responsibility



* The woman, her baby and family/whānau (as defined by the woman) are at the centre of all conversations and decisions about her care.

Figure 6: Process Map 5: Emergency transfer



* The woman, her baby and family/whānau (as defined by the woman) are at the centre of all conversations and decisions about her care.